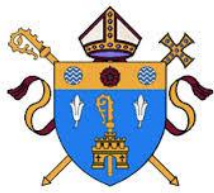
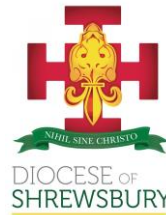


North West Catholic Dioceses Training Partnership



DIOCESE OF SALFORD



DIOCESE OF SHREWSBURY



The Postgraduate Catholic Leadership Programme 2019

The Purpose of the PGCLP:

The PGCLP has now been running successfully for two years and was developed because of conversations with Catholic leaders who have participated in the Catholic Leadership Programme over the past 15 years. Each year the written evaluations from CLP delegates express an appetite for continuing, deepening or refreshing the spirituality, understanding of mission and the network of support experienced during the programme. For instance, delegates from the 2018 CLP cohort commented:

- *“I wish I could continue having a regular opportunity to engage with a course to encourage further reflection, but also have the opportunity to build stronger bonds with fellow Catholic leaders”.*
- *“I will really miss the CLP! I wish it could be on-going for the rest of my career as a support through the difficult and challenging times”*

The challenges facing leaders in Catholic schools are not going away, and there is a real need for opportunities for spiritual renewal and the formation of a deeper understanding of the Church’s transformational mission.

“This personal reservoir of hope for the individual has to be periodically refilled by a variety of replenishment and sustainability strategies, without which the leader will either ‘burn out’ by being unable to sustain hope and energy levels in the face of relentless pressures for change”. (Alan Flintham: ‘Reservoirs of Hope’).



The focus of both the conferences and evening sessions would be ‘food for the journey’, making sense of the challenge of Catholic leadership. There will be opportunities for reading, discussion, interpretation and reflection with peers. We will explore the spirituality of leadership using the Emmaus model: *Jesus listened to their experience, accompanied them on the road, engaged in dialogue with them, drew them out, and broke bread with them. He led them to a deeper reality. Jesus taught them who He was and from this they took hope and the strength to continue their journey.*

Who is it for?



Staff holding a senior leadership post in their school who have completed the CLP. The programme is designed for experienced Catholic leaders who wish to explore their vocation in a deeper way. It is not intended to be a ‘CLP Mark II’. There will be opportunities for reflection and spiritual refreshment, and for developing their resilience and ‘a hope-filled vision’, as well as for exploring individual issues, needs and future aspirations.

The Structure of the Programme:

- Four evening sessions with a speaker
- A one-day conference
- Two residential conferences
- At least three one-to-one sessions with a mentor

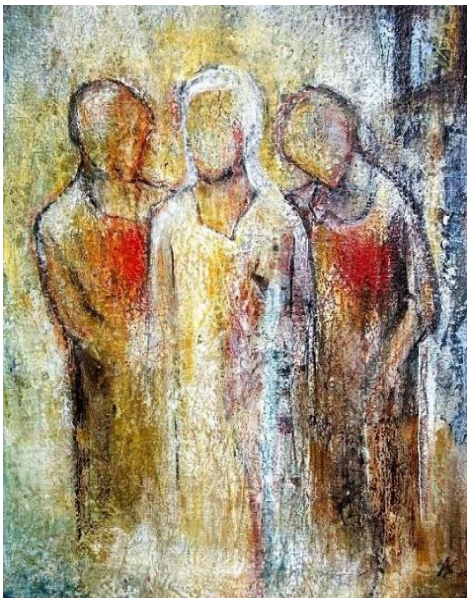


Group Sessions:

The delegates will work in groups of 4 or 5 at each evening session and at the conferences. Discussions will be structured, based upon prior reading of programme texts and will be facilitated by members of the PGCLP team.

Feedback from Delegates:

The programme inaugurated in January 2017 has been extremely well received by the delegates:



- *“The PGCLP has given me the gift of time to stop, reflect and strengthen myself in my development as a ‘servant leader’ and also as a person. This time amongst great people has been invaluable”.*
- *“The programme has exceeded all my expectations. I really valued the chance for personal reflection- it has proved to be very useful and much needed, particularly at the start of a new job in a very challenging school”.*
- *“I have had the opportunity to reflect on my leadership and how we might shape the Catholic mission in our school.”.*
- *“I have been inspired by the speakers, like-minded colleagues and the core leadership team of the programme”.*
- *“It has revived my faith and renewed my inner strength”.*

Start Date:
January 2019



Programme Cost:
£900

For further details about the programme contact: **Leo Conley (Programme Leader)**
leoconley@hotmail.com